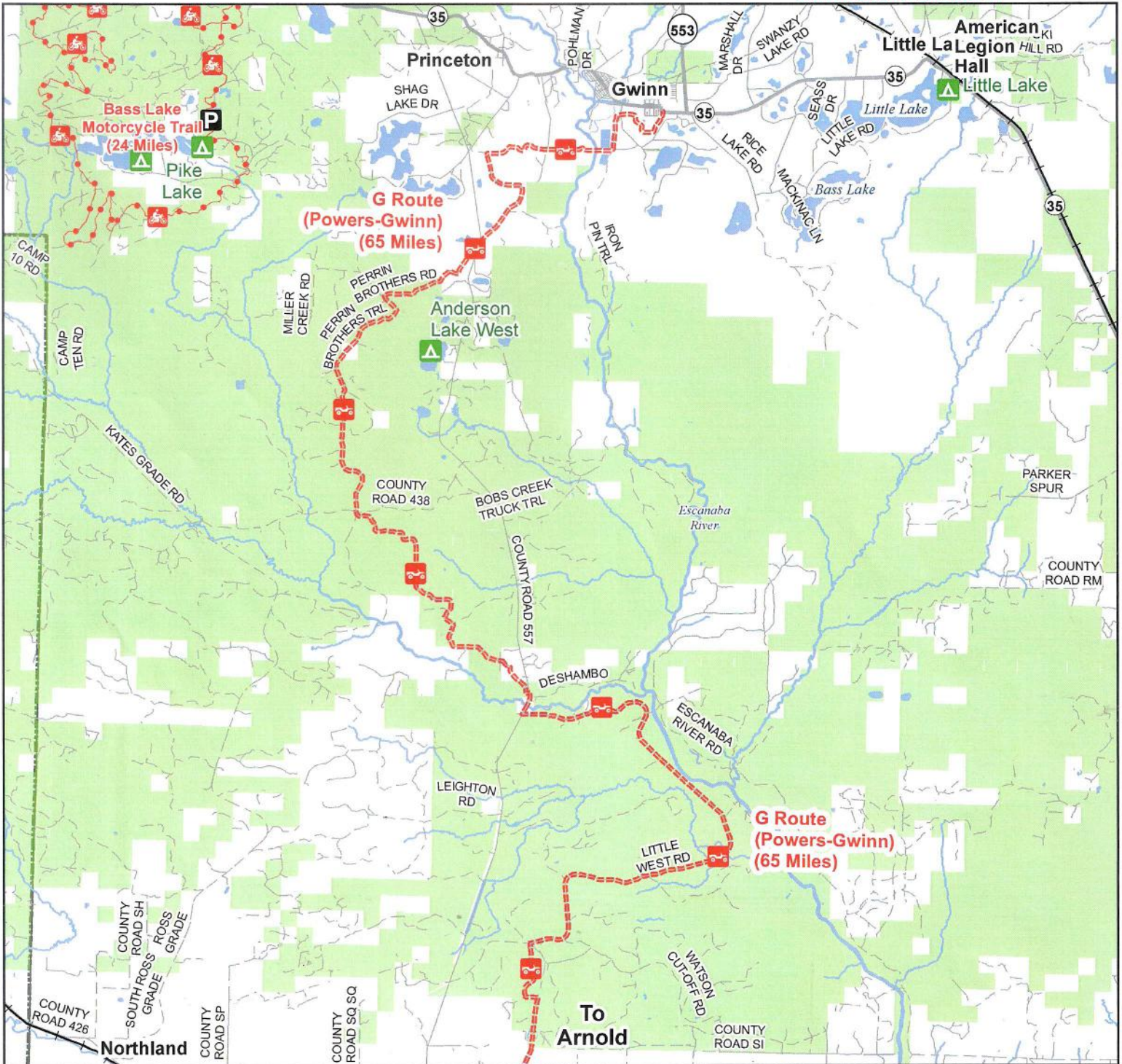




G Route (Powers-Gwinn) North

Marquette & Menominee Counties, Michigan

ADVISORY: Trails and Routes have two-way traffic.
 DISCLAIMER: Trails shown on this map are an approximate representation of the trail system at the time of publication and may not reflect current ground conditions.
STAY ON SIGNED TRAILS ONLY!



- State Forest Campground
- Parking Lot
- ORV Route
- Motorcycle Trail (DNR License)
- ORV Route – ORVs of all sizes including off-road motorcycles. ORV license and trail permit required unless licensed by the Secretary of State.
- Motorcycle Trail – Motorcycles Only. ORV license and trail permit required.
- Railroad
- Lakes and Rivers
- State Forest Land
- County Boundary



Michigan.gov/orvinfo

Updated: August 22, 2019